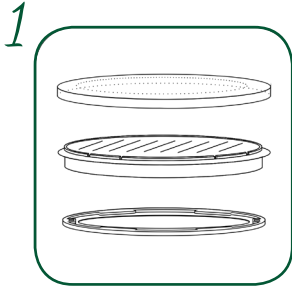
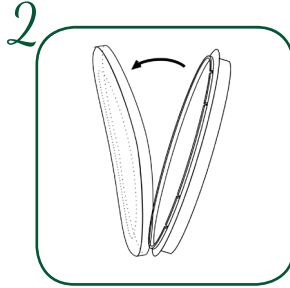


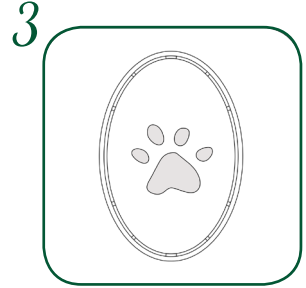
A Lasting Impression



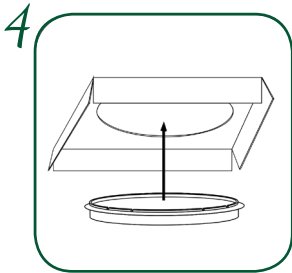
Inside this pack is a tray filled with impression material with a clear, protective cover. Underneath the tray is an oval bezel (step 5)



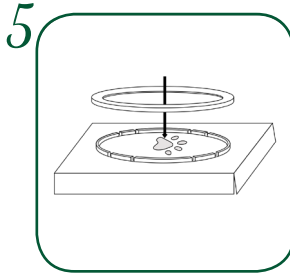
Remove the cover from the tray and put to one side. Be careful not to mark the surface before use.



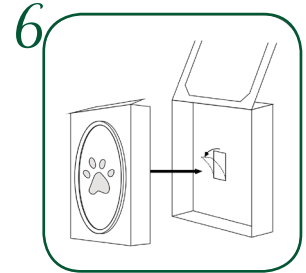
Clean the paw you will be imprinting and trim any long hair. Place the paw centrally on the tray and apply pressure evenly. Hold in place for 10 seconds.



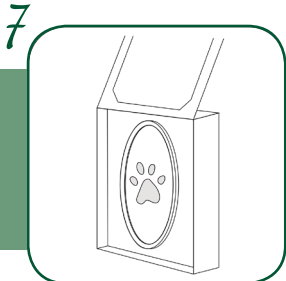
Remove the cardboard insert from the display box. Place the cardboard insert over the oval tray, lining it up with the oval cutout.



Push the bezel firmly onto the tray and it will "click" into position, fixing the three pieces together.



On the inside base of the display box is an adhesive tab. Remove the peel-off tab and place the insert into the box.



Apply pressure on the bezel and the back of the display box being careful not to mark the surface. If you prefer you can let the impression dry beforehand.

For the best results

- Keep tray at room temperature and out of direct sunlight until ready to use.
- Let the impression set naturally over 24-48 hours. Material takes 1 - 2 months to harden fully

